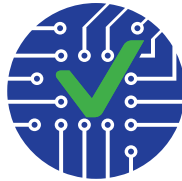
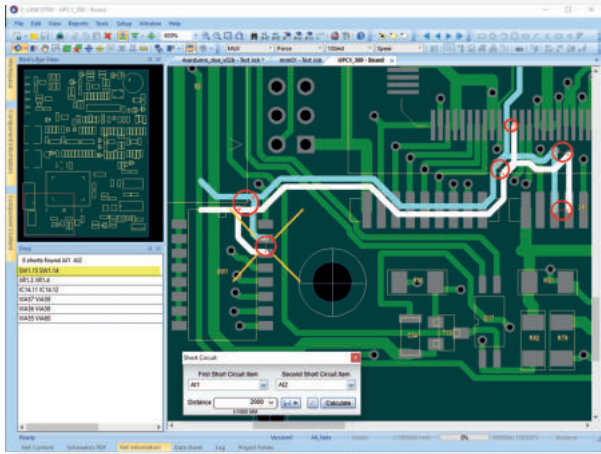


Quality Management Software



QMAN

PAPERLESS REPAIR SOFTWARE

- > Fast failure diagnosis and repair
- > Provides process visibility to help draw conclusions and make decisions that improve performance and quality
- > Visual inspection stations with checklist
- > Self learning and verified repair database
- > Comprehensive statistic reports
- > Drill down features

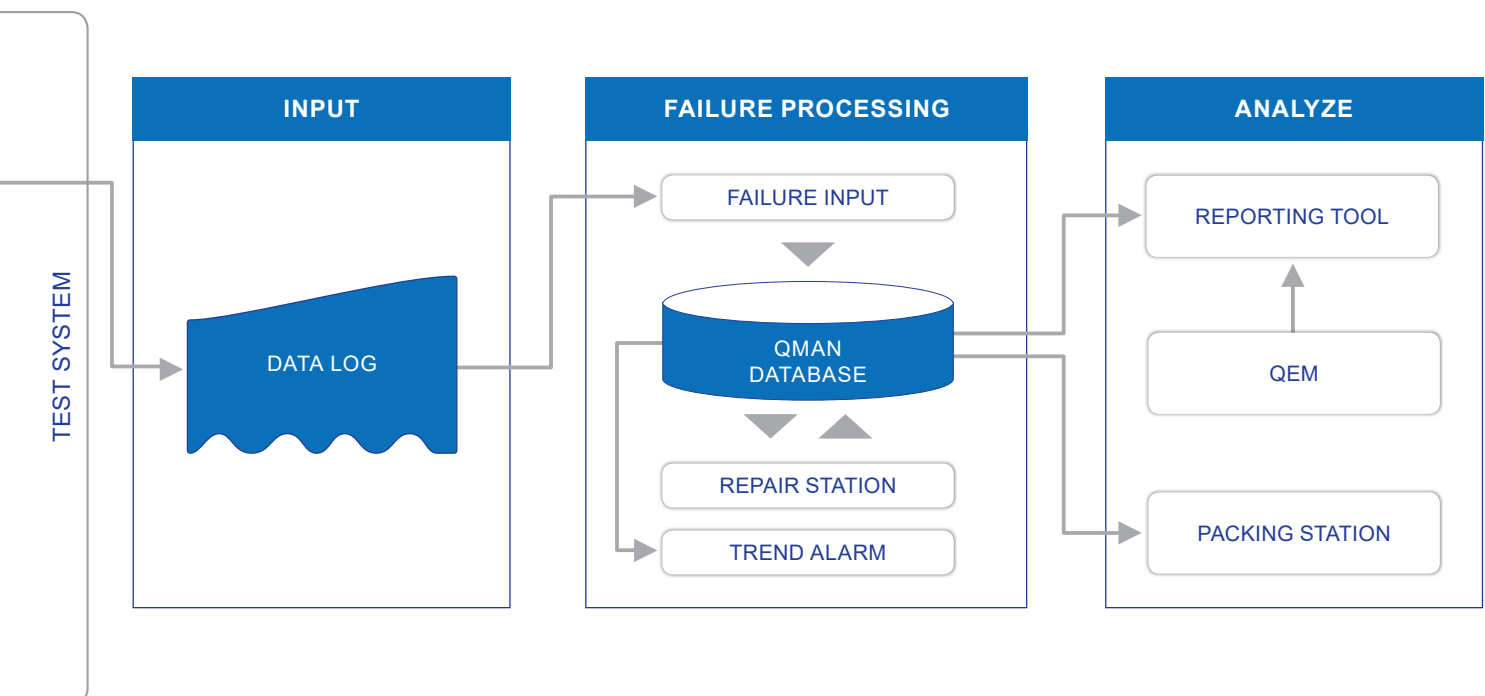
QMAN helps to repair faster as well as monitor and evaluate the production process.

Paperless Repair



QMAN

PAPERLESS REPAIR SOFTWARE



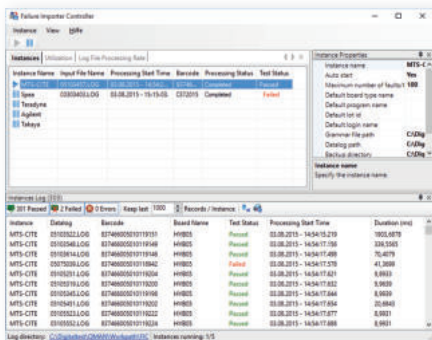


More efficient production process and product quality

1

INPUT

QMAN captures test results from equipment like AOI, AXI, SPI, ICT, Boundary Scan, functional and flying probe test, as well as from manual inspection and end-of-line test.



2

FAILURE PROCESSING

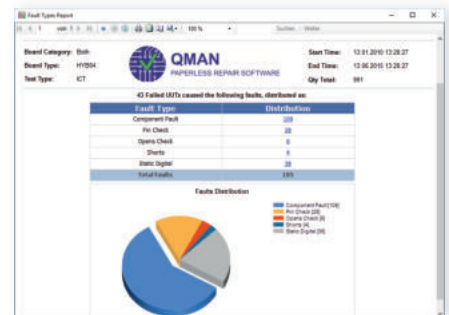
QMAN speeds up repair by displaying the fault location and repair suggestion in our fully integrated layout and schematic viewers.



3

ANALYZE

Generates comprehensive drill down reports to analyze and observe the production process. For example KPI reports like FPY and DPMO and WIP.



QMAN Features

Failure Import

Interface to test and inspection systems. With the additional debug tool new interfaces can be created and customized.

Repair Station

To optimize repair time, paperless repair has an integrated failure catalog, schematics and layout viewer.

Trend Alarm

Customized trend alarms can be configured to monitor the production process.

Visual Inspection Station

Each PCB type can get one or more checklists for visual inspections assigned. The checklists are stored in one central place in the database.

Functional Test Station

All test systems, which do not have a data log functionality can be connected to QMAN.

Verpackungsstationen

Ensures that all planned inspection and test operations were carried out with the result „pass“.

Report Generator

Comprehensive statistical reports. Drill down capabilities for quick analysis of abnormalities to help provide quality improvements.

Company

Since 1980 Digitaltest is a strong partner of the electronics industry and has years of experience in development, implementation and support of automated test equipment (ATE) for electronic printed circuit boards. The complete product portfolio of the global company includes hardware technology, software to automate the production and evaluate the production process with its quality management software.

Digitaltest GmbH

Lorenzstr. 3
76297 Stutensee /// Germany
Phone +49 7244 9640-0
E-Mail info@digitaltest.com

